

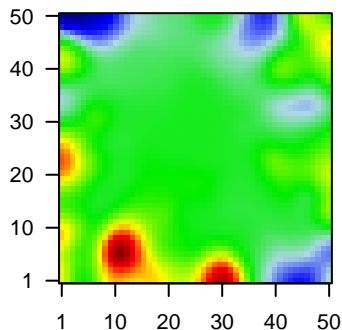
MPI-126

Global Summary

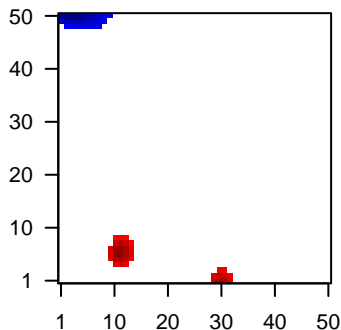
%DE = 0.04
 # genes with fdr < 0.2 = 365 (275 + / 90 -)
 # genes with fdr < 0.1 = 255 (200 + / 55 -)
 # genes with fdr < 0.05 = 202 (159 + / 43 -)
 # genes with fdr < 0.01 = 125 (102 + / 23 -)
 # genes in genesets = 13152

<FC> = 0
 <t-score> = -0.03
 <p-value> = 0.29
 <fdr> = 0.96

Portrait



Regulated Metagenes



Global Genelist

Rank	ID	log(FC)	fdr p-value	Description
1	203509_at	-1.36	2e-16 8e-13	49 x 40 sortilin related receptor 1 [Source:HGNC Symbol;Acc:HGNC:203509]
2	209138_x_at	0.97	2e-16 8e-13	41 x 42 immunoglobulin lambda constant 2 [Source:HGNC Symbol;Acc:HGNC:209138]
3	210258_at	-1.94	2e-16 8e-13	49 x 40 regulator of G protein signaling 13 [Source:HGNC Symbol;Acc:HGNC:210258]
4	211798_x_at	2.47	2e-16 8e-13	10 x 5
5	215379_x_at	1.18	2e-16 8e-13	41 x 42 immunoglobulin lambda constant 2 [Source:HGNC Symbol;Acc:HGNC:215379]
6	216853_x_at	3.63	2e-16 8e-13	11 x 5 immunoglobulin lambda variable 3-19 [Source:HGNC Symbol;Acc:HGNC:216853]
7	211430_s_at	1.07	7e-15 1e-10	0 x 4 immunoglobulin heavy constant gamma 2 (G2m marker) [Source:HGNC Symbol;Acc:HGNC:211430]
8	216365_x_at	2.35	7e-15 1e-10	11 x 5
9	215121_x_at	0.89	2e-14 1e-10	41 x 42 immunoglobulin lambda constant 2 [Source:HGNC Symbol;Acc:HGNC:215121]
10	219457_s_at	2.3	2e-14 6e-09	32 x 2 Ras and Rab interactor 3 [Source:HGNC Symbol;Acc:HGNC:219457]
11	206018_at	2.19	4e-13 6e-09	6 x 32 forkhead box G1 [Source:HGNC Symbol;Acc:HGNC:206018]
12	204915_s_at	2.16	8e-13 6e-09	45 x 49 SRY-box 11 [Source:HGNC Symbol;Acc:HGNC:204915]
13	204591_at	2.15	9e-13 9e-09	17 x 7 cell adhesion molecule L1 like [Source:HGNC Symbol;Acc:HGNC:204591]
14	204914_s_at	2.14	1e-12 5e-08	45 x 49 SRY-box 11 [Source:HGNC Symbol;Acc:HGNC:204914]
15	205801_s_at	-1.46	5e-12 5e-08	0 x 7 RAS guanyl releasing protein 3 [Source:HGNC Symbol;Acc:HGNC:205801]
16	216557_x_at	1.88	8e-12 5e-08	10 x 5 immunoglobulin heavy variable 3-21 [Source:HGNC Symbol;Acc:HGNC:216557]
17	214916_x_at	1.56	8e-12 5e-08	11 x 5
18	200953_s_at	1.44	1e-11 5e-08	0 x 3 cyclin D2 [Source:HGNC Symbol;Acc:HGNC:200953]
19	214677_x_at	0.79	1e-11 1e-07	41 x 42 immunoglobulin lambda constant 2 [Source:HGNC Symbol;Acc:HGNC:214677]
20	204913_s_at	2.03	2e-11 2e-07	45 x 49 SRY-box 11 [Source:HGNC Symbol;Acc:HGNC:204913]

Global Geneset Analysis

Rank	GSZ	p-value	#all	Geneset
<i>Overexpressed</i>				
1	14.93	NULL	429	GSEA C2SMID_BREAST_CANCER_NORMAL_LIKE_UP
2	14.02	NULL	44	MF antigen binding
3	12.1	NULL	52	BP complement activation, classical pathway
4	12.09	NULL	693	Chromatin states peripheral blood_3_TxFnk
5	12.04	NULL	516	GSEA C2SMID_BREAST_CANCER_LUMINAL_B_DN
6	11.83	NULL	39	BP complement activation
7	11.22	NULL	32	Reference Signatures 1.1_Plasma Cells
8	11.07	NULL	161	BP adaptive immune response
9	10.66	NULL	431	BP immune system process
10	10.27	NULL	932	Chromatin states peripheral blood_3_TxFnk
11	9.96	NULL	2203	Chromatin states Colon
12	9.95	NULL	2197	Chromatin states erythrocytes peripheral blood_11_BivFnk
13	9.72	NULL	265	GSEA C2WALLACE_PROSTATE_CANCER_RACE_UP
14	9.51	NULL	626	Chromatin states killer cells peripheral blood_3_TxFnk
15	9.5	NULL	3184	Chromatin states erythrocytes peripheral blood_12_EnhBiv
16	9.43	NULL	331	GSEA C2LINDGREN_BLADDER_CANCER_CLUSTER_2B
17	9.43	NULL	53	BP regulation of complement activation
18	9.43	NULL	642	Chromatin states killer cells peripheral blood_3_TxFnk
19	9.41	NULL	2380	Chromatin states G1_Colon
20	9.03	NULL	39	BP B cell receptor signaling pathway
<i>Underexpressed</i>				
1	-12.9	NULL	1052	GSEA C2DODD_NASOPHARYNGEAL_CARCINOMA_DN
2	-12.73	NULL	1527	GSEA C2PUJANA_BRCA1_PCC_NETWORK
3	-12.49	NULL	509	GSEA C2RODRIGUES_THYROID_CARCINOMA_POORLY_DIFFERENTIATED
4	-12.27	NULL	439	GSEA C2SHEDDEN_LUNG_CANCER_POOR_SURVIVAL_A6
5	-11.67	NULL	726	GSEA C2PUJANA_CHEK2_PCC_NETWORK
6	-11.41	NULL	966	GSEA C2KINSEY_TARGETS_OF_EWSR1_FLII_FUSION_UP
7	-10.86	NULL	575	GSEA C2CAIRO_HEPATOBLASTOMA_CLASSES_UP
8	-10.53	NULL	280	GSEA C2MANALO_HYPOXIA_DN
9	-10.16	NULL	616	GSEA C2WEI_MYCN_TARGETS_WITH_E_BOX
10	-9.67	NULL	703	GSEA C2LEE_BMP2_TARGETS_DN
11	-9.52	NULL	219	Reference Signatures B-cells
12	-9.46	NULL	319	Melanomaerber_wt/wt_melanoma-cells-SpotA
13	-8.97	NULL	115	Glioma WILLSCHEER_GBM_Verhaak-CL_up (C)
14	-8.81	NULL	244	GSEA C2KOBAYASHI_EGFR_SIGNALING_24HR_DN
15	-8.75	NULL	137	GSEA C2ROSTY_CERVICAL_CANCER_PROLIFERATION_CLUSTER
16	-8.09	NULL	294	GSEA C2WONG_EMBRYONIC_STEM_CELL_CORE
17	-8.08	NULL	564	GSEA C2RODRIGUES_THYROID_CARCINOMA_ANAPLASTIC_UP
18	-8.02	NULL	728	GSEA C2KRIGE_RESPONSE_TO_TOSEDOSTAT_24HR_DN
19	-7.9	NULL	174	GSEA C2GRAHAM_CML_DIVIDING_VS_NORMAL QUIESCENT_UP
20	-7.87	NULL	5529	LymphomaHOPP_Txn_elongation

p-values

